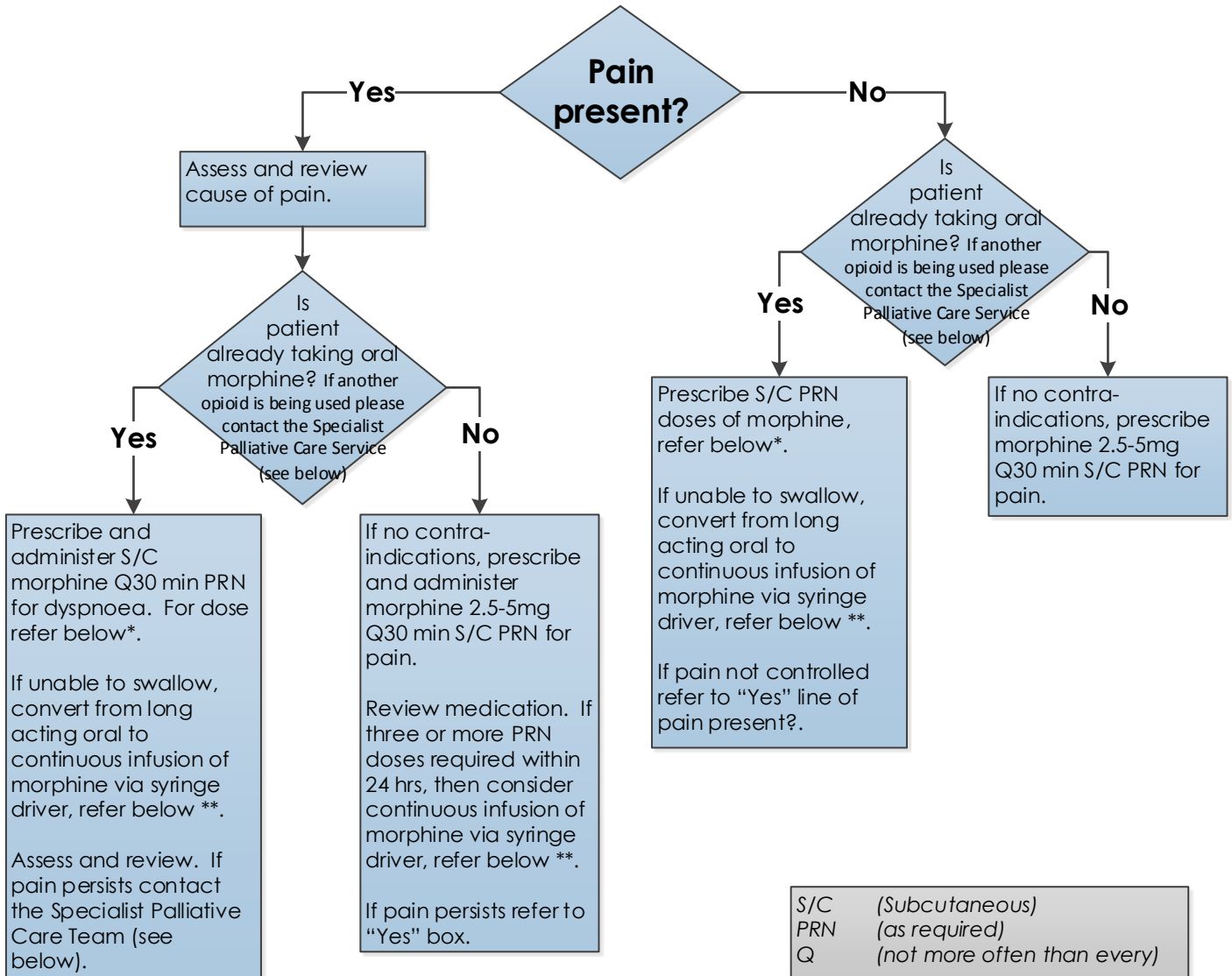




# Last Days of Life – Pain Guidelines



## MORPHINE CALCULATIONS

- \* To convert from oral to S/C, prescribe half the oral dose, eg 10mg PRN Q30 mins PO > prescribe 5mg PRN Q30 mins S/C PRN doses.
- \* PRN doses of morphine should be **one sixth** of the **24 hour opioid dose** in the syringe driver, eg morphine 30mg S/C via a syringe driver given over 24 hrs will require 5mg morphine S.C PRN Q30 minutes.
- \*\* eg M-Eslon 60mg bd PO and no PRN doses required > prescribe morphine 60mg S.C over 24 hours via syringe driver and morphine 10mg PRN S/C Q30 mins..

**If you require further advice 24 hours, 7 days a week please contact the Specialist Palliative Care Service at Mercy Hospice Auckland ph 361 5966**